

Complete control of school bus routing with multi-district database ...on demand map interaction



**ROUTING
WIZARD**



Automatically creates all stops and routes, including door-to-door, preserving input on a flexible database.

Perfect for multidistrict school bus routing with daily specific route manifests.



Norse Systems, Inc.

245 Sage Hollow Road. Guilford, CT 06437

Phone/Fax: [800] 769-8468.

Email: norse@norsesys.com

On the Net: www.norsesys.com

ROUTING WIZARD

This simple program generates your entire mapped routes. Never needs back-up...is totally secure... and it's user friendly!

Just look at what **Routing Wizard** does for your fleet. How much up-to-the-minute information are your missing? Imagine how much more productive, safer and profitable your bus operation can be...all at your fingertips.

Routing Wizard allows you to track...

Every student within your entire system

Every Stop Point ...kiosks, temporary, phantom and forced

Every school and it's relation to every student

Dispatching, driver time sheet, field trip management... and much more

Utilities to allow experimenting, free-form reporting, security management and automatic application update



You can experiment with routes as needed and/or return to the original routes

Automatically loads the appropriate maps, even when school district boundries are crossed

Program adopts district rules for eligibility, walking distance, special needs, extra programs, etc.

Stops, routes and schedules can all be changed from the map

Routing Wizard is the culmination of five years of intense software creation and refinement. It offers school system administrators an instantaneous look at their entire school district, mapped and tracked, to show every student, every bus, every stop point, every school ...everything you need NOW... to run an efficient, safe and profitable program.



Norse Systems, Inc.

© Norse Systems, Inc., All rights reserved, 2005.
Bus Wizard Software, Bus Wizard
and Norse School Route/Map
are registered trade marks of Norse Systems, Inc.

Bus Wizard Software

ROUTING WIZARD is a
Norse BUS WIZARD product



Here's how effortlessly **ROUTING WIZARD** mapping software works for you...

Norse Systems *Routing Wizard* offers you proven transportation application software via the Internet (Virtual Server Services). You will receive your own private database for your exclusive use (IBM "Universe") on a fault tolerant server, residing in a host farm completely managed for you by Norse Systems.

☞ You will connect your PC or Local Area Network to the database using proprietary "Gateway" software that provides secure encrypted and unlimited access for you from any location.

☞ You will deploy the map software on each workstation for a low cost one time fee.

☞ Your software will be updated regularly and your data will be backed up daily.

☞ We even provide disaster recovery systems in the event of catastrophe at no extra charge.

☞ This type of deployment is easy, affordable, simple to administer, unlimited in scale and completely secure.

Let *Routing Wizard* do all the hard work for you!

☞ The powerful integrated mapping system allows you to geocode students, schools, yard facilities and stops automatically.

☞ It manipulates and optimizes your routes directly from the map.

☞ It lets the map analyze your stops.

☞ You can add a stop yourself on the map, and the system will automatically create new stops where required.

☞ It will support door-to-door service for preschool or special needs.

☞ The system will automatically assign students to the appropriate stops.

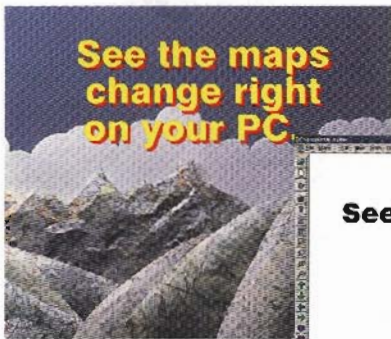
☞ It automatically organizes stops in routes based on bus capacity.

☞ It allows for the optimization of driving time and distance while you exercise complete control of specific driving instructions in order to avoid turn-arounds or arrival from the wrong direction.

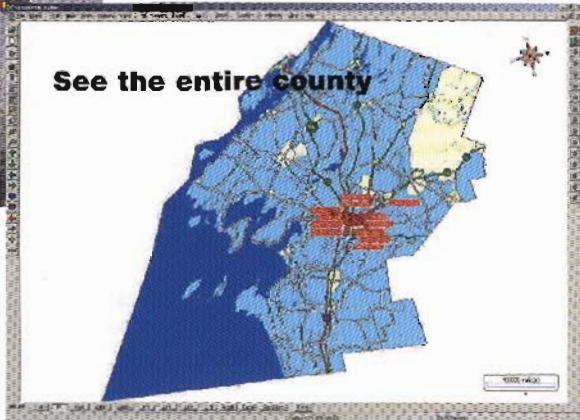
All of this is done from the map and automatically reflected in the database, including adjustment of each student's transportation schedule.



See the maps change right on your PC.

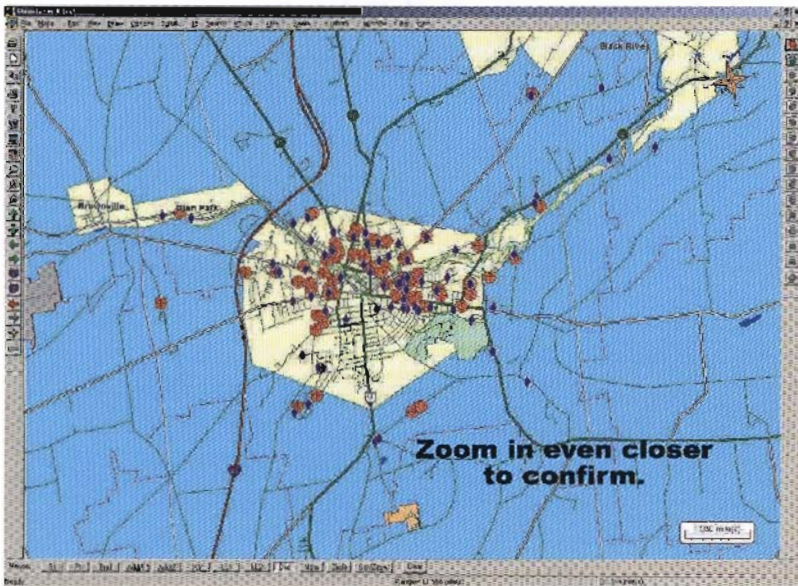


See the entire county



- First select the district and students ● you wish to work with.
- Populate the student database and vehicle yards in your district.

- Establish your eligibility rules.
- Identify any traditional school bus stops ◆ (corners, kiosks, etc.) that you wish to use.
- Let the system automatically load the map or maps you need.
- Send the data to the map for automatic geocoding, then display any element of your database for review or manipulation on the map.

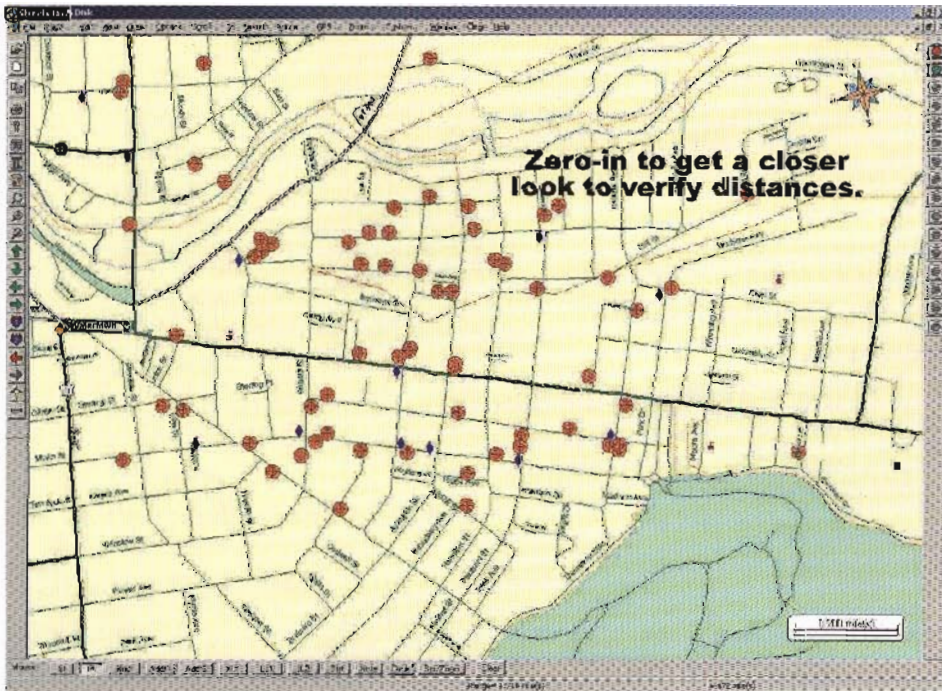


- Use the map tools to zoom-in, measure distance, identify addresses, answer your questions and help you relate to your data geographically.
- Display selected students to the map with your established stops, add or adjust stops using the map, then let the system automatically create additional stops as required, then assign students to stops for you in about 60 seconds.
- Use the system to automatically organize the stops into logical routes based on bus capacity.
- Optimize your routes for driving

time and distance, determine your depart and arrival times, and adjust your specific route for service and safety considerations, using the map tools.

Finally, you tell the system to update your database and every student's schedule. And, that's only the beginning...

Zero-in to get a closer look to verify distances.



Map resolution to inches.



No more Pushpins!

ROUTING WIZARD lets you maintain a flexible database of student records up to the second



Routing Wizard lets you maintain up to the second changes and revisions of your student/mapping database, including...

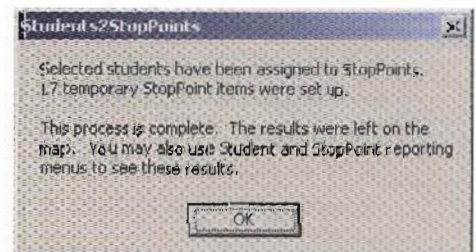
- ❏ School database maintains grades and start/dismiss times, as well as graduation rules. Graduation and school enrollment at the start of the school year is automatic.
- ❏ Students can participate in more than one school program or be enrolled in special programs with flexible schedules.
- ❏ Students can have multiple addresses, multiple guardians, multiple contacts and be assigned to multiple bus routes during the week.
- ❏ Data entry uses Graphic User Interface (Windows compatible GUI) or character based data entry, which is often faster, based on individual user preferences.
- ❏ **Routing Wizard** includes access to CHARTER MANAGER2 (field trips), Time and Pay (integrated dispatching and driver time sheets), and Inventory Control to provide for complete management of your transportation system.
- ❏ For private contractors and state or county agencies **Routing Wizard** can be deployed for multiple school districts, with complete operator level security controls.



Selection Dialogue



School/Grades



Automatic Stop Assignment

Typical selection options available. Selecting just what you need to see is fast and easy.

ROUTING WIZARD

lets you control your total transportation operation for optimum efficiency and customer service

At last, here is a solution for managing the real world problems you encounter with your transportation program.

Browse for any student ...anywhere

Soundex shows all names that sound alike...with addresses e.g., Smith, Smythe, etc.

Shows students multiple addresses where applicable

Shows schools and stops for public, magnet and religious schools, special needs

Shows students' bus disciplinary records and/or special needs

Right click on any student-- get instant records



Shows multiple guardians with multiple contact information-- cell phones, office numbers, etc.

Add/delete students as situations change

Low Capital Investment
... under \$500 for start-up cost.

Low monthly fee includes:
Database
Application software
Internet-based infrastructure
(Virtual Server)



Call Norse Systems today for details



Phone/Fax: (800) 769-8468

Email: norse@norsesys.com



Bus Wizard Software

ROUTING WIZARD is a BUS WIZARD Software Product



Norse Systems, Inc.

245 Sage Hollow Road. Guilford, CT 06437

Phone/Fax: [800] 769-8468.

Email: norse@norsesys.com

On the Net: www.norsesys.com